

Model: LXDGY-13A

Pulse Output Water Meter

Feature:

- Single jet, Dry-dial
- Material body: Nylon plastic
- Size: DN15mm, (1/2")
- Available for cold water (50°C)
- Accuracy: Class B / R80 / R100
- Pulse output reading: 10 L/Pulse



Main Technical Data:

According to ISO4064 (GB/T778.1-1996) Standard

Size		Class	Qs	Qp	Qt	Qmin	Min reading	Max reading
DN(mm)	Inch		Overload flow	Nominal flow	Transitional flow	Min flow		
		m ³ /h			L/h		m ³	
15	1/2"	A	3	1.5	150	60	0.0001	99999
		B			120	30		

According to ISO4064 (GB/T778.1-2007) Standard

DN SIZE	Mm Inch	15 1/2"
Q4(m ³ /h)		3.125
Q3(m ³ /h)		2.5
R80	Q2(L/h)	50
	Q1(L/h)	31.25
R100	Q2(L/h)	40
	Q1(L/h)	25
Min reading(m ³)		0.0001
Max reading(m ³)		99999
Max pressure(MAP)		16
Max loss(Δ P)		63
Max temperature		T50

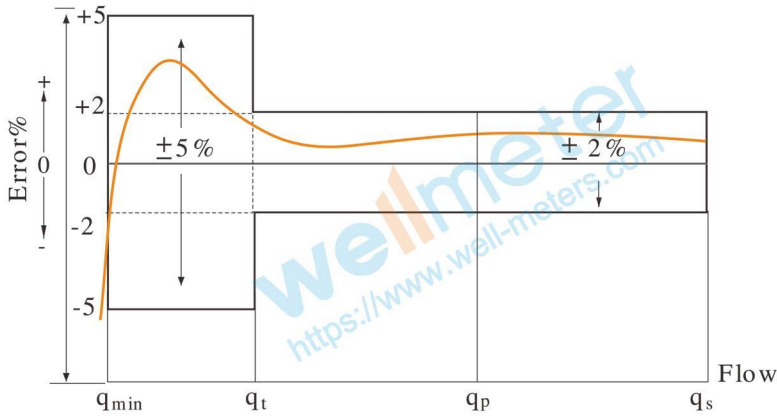
INDICATING ERROR

At low zone is ±5% from minimum flow rate (qmin) to transitional flow rate (qt) exclusive boundary

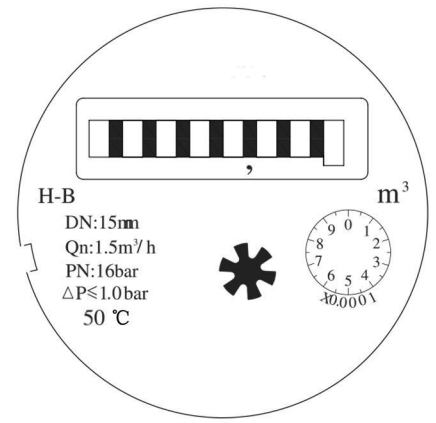
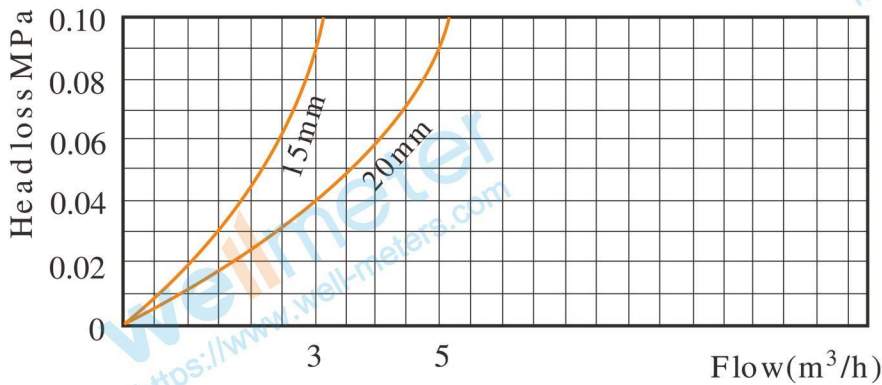
At high zone is ±2% from transitional flow rate (qt) to overload flow rate (qs)

Model: LXDGY-13A

Error Curve:

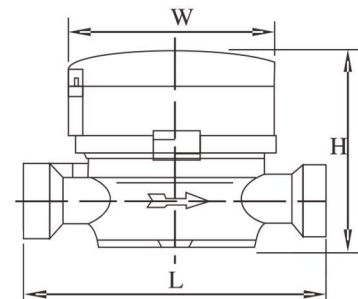


Head Loss Curve:



Dimensions and Weight:

Meter size	L	W	H	Connecting Thread	Weight
Dia DN (mm)	Length	Width	Height	D	Kg
	mm				
15	110	80	80	G 3/4B	0.35



WORKING CONDITION:

Water temperature: ≤50°C for cold water meter

Working pressure: ≤1.6Mpa

wellmeter

Ningbo Well Energy Technology Co.,Ltd

<https://www.well-meters.com>

sales@well-meters.com

+86-574-63702808